



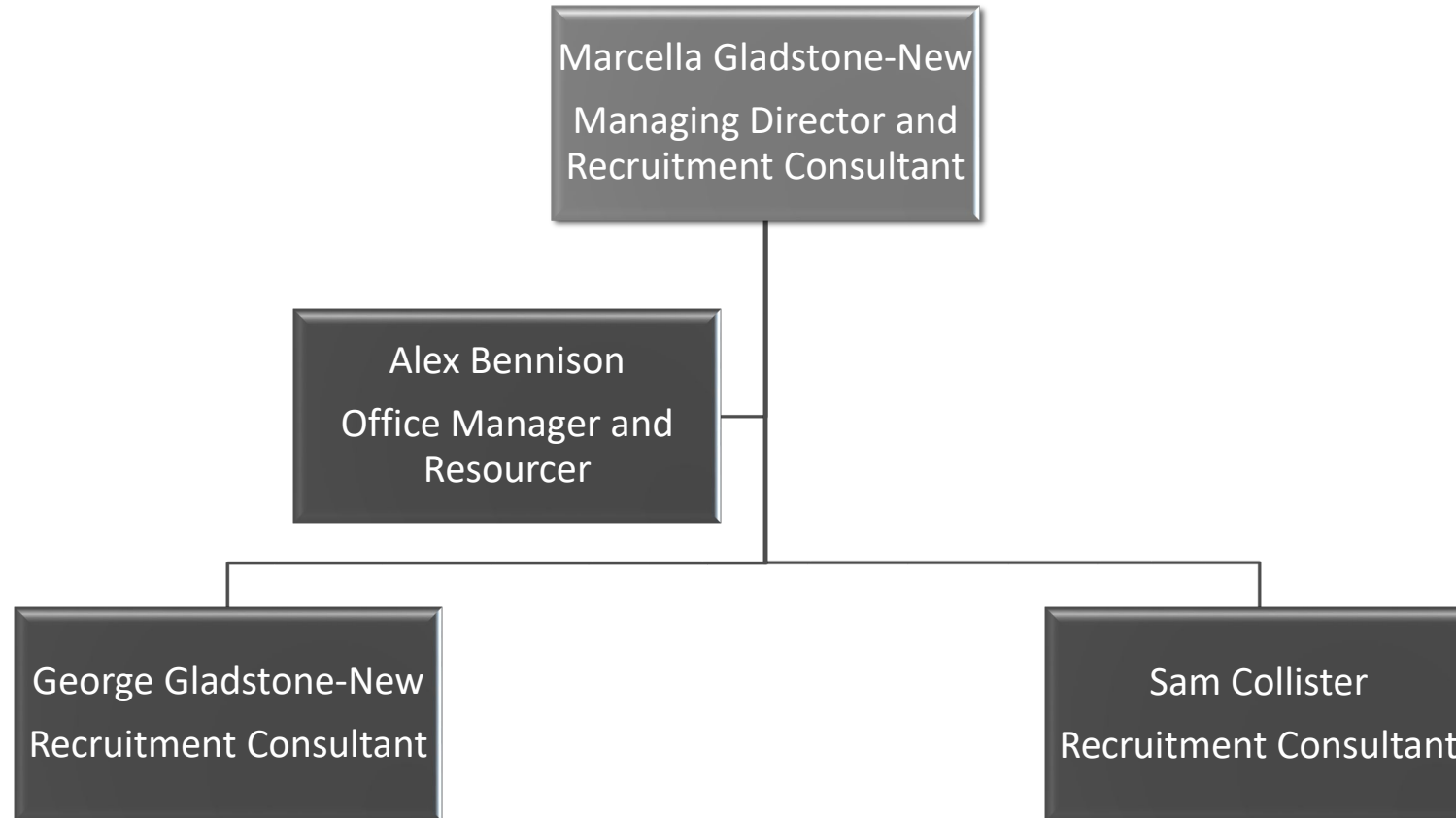
RESOURCING SPECIALISTS

24 HIGH STREET, WOKING, SURREY, GU21 6BW

TEL: 01483 729222

WWW.OPRUK.CO.UK

Organisational Structure



Office - About Us:

- The goal of OPR is provide clients with ideal candidates as quickly and efficiently as possible
- An independent high street agency, established in 1996, with an excellent understanding of the local area, market and trends
- REC industry approved consultants
- A reputation built on recommendations as well as results
- We specialise in supplying temporary, permanent and contract office based staff locally and Nationwide
- Fully GDPR compliant

People - Representing Candidates

- Friendly and approachable consultants
- Strong relationships with excellent local employers
- CV, career and interviewing advice
- We are committed to equal opportunities for all
- Temp of the month scheme – recognition of excellence



Recruitment – Benefits of using our service

- A dedicated talent acquisition department to headhunt top candidates
- A superior on-line presence and access to top digital job platforms, so we can recruit Nationwide, as well as our database of local candidates
- We meet all of our candidates in person so we can make a full and accurate assessment on the best candidates to put forward in terms of skills, personality and cultural fit.
- Fast and effective sourcing for immediate temporary bookings
- We are able to skills test candidates as well as offering services such as pay-rolling.
- Advice on the candidate market and candidate attraction, with annual salary surveys as a useful guideline

Key Positions We Recruit For:

- Account Management
- Administration
- Advertising and PR
- Bilingual Roles
- Business Development
- Customer Service
- Data Analysts
- Change Management
- Digital Marketing
- Events
- Facilities
- Finance / Accounts
- Graphic and Web Design
- Human Resources
- IT Helpdesk
- Learning & Development
- Legal
- Logistics
- Marketing
- PA and EA
- Payroll
- Procurement
- Project Management
- Property
- Reception
- Sales
- Supply Chain
- Talent Acquisition
- Warehouse